

## BASKETWEAVE STITCH

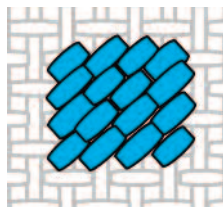
This stitch is usually worked on canvas or an evenweave fabric, and is worked in diagonal rows across the weave to help reduce distortion.

It can be worked on any size or shaped area.

**1.** Bring the thread up at the corner of the area to be worked (**a**). Take the thread diagonally forwards one hole and take it down at **b**. This stitch forms row one.

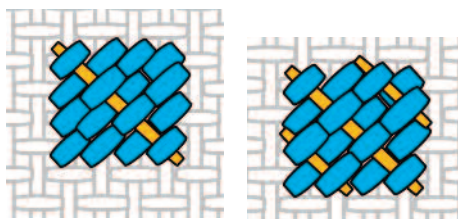
**2.** Bring the thread back up to start row 2 in the hole adjacent to the previous stitch (**c**) and work a diagonal stitch forwards across one hole. Bring the thread back up on the other side of the row one stitch, and make another stitch forwards.

**3.** Continue working in rows, making stitches to either side of the stitches in the previous row, which creates a basket-like or brickwork effect.

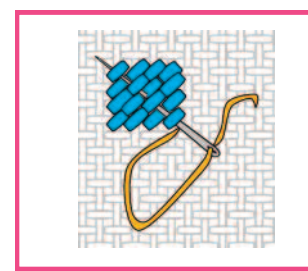
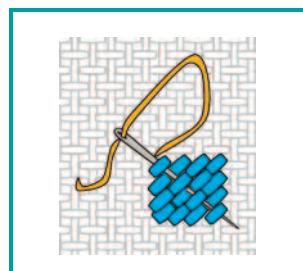
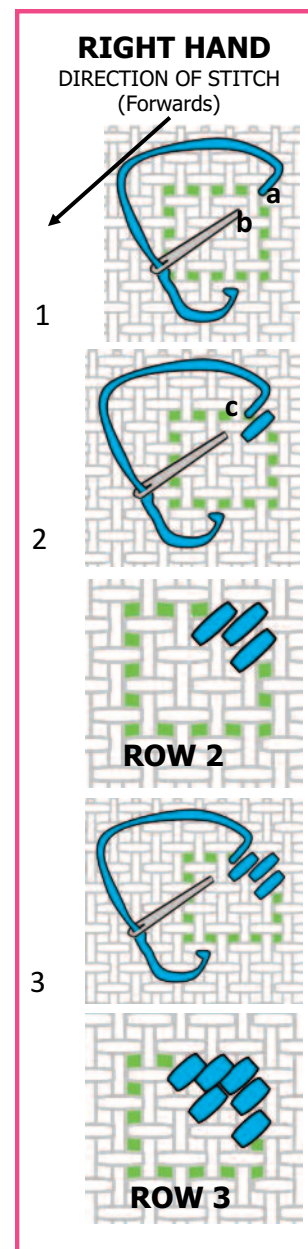


## WOVEN BASKETWEAVE STITCH

Add texture to the stitch by weaving a new thread through rows of stitching, working to the opposite diagonal.



Weave occasional threads, or regular alternate rows



This guide is for home use only and not for reproduction, or to be modified for commercial or manufacturing purposes in any medium, including charitable and fundraising enterprise, for which express written permission is required.

© Dizzy & Creative 2022, all rights reserved.