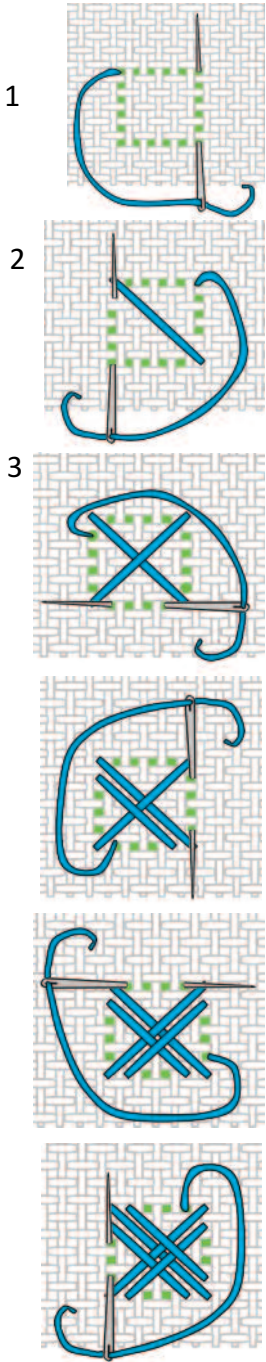


LEFT HAND



NORWICH STITCH (Also called WAFFLE STITCH)

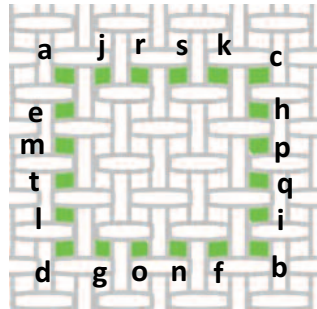
This stitch is usually worked on canvas or an evenweave fabric, but can be worked on any fabric.

It is usually worked on an even number of holes, to any size.

The stitch is worked diagonally across a square in a sequence which creates a raised woven pattern at the centre.

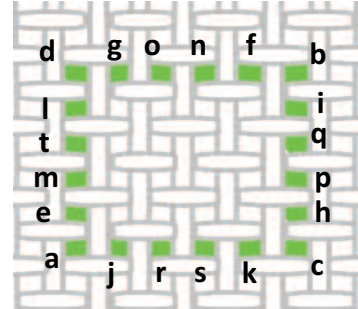
STITCH SEQUENCE

LEFT HAND



STITCH SEQUENCE

RIGHT HAND

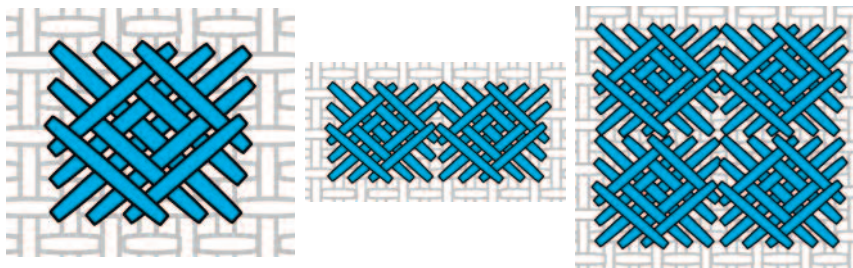


1. Bring the thread up at **a**. Take the thread diagonally across and take it down at **b**.

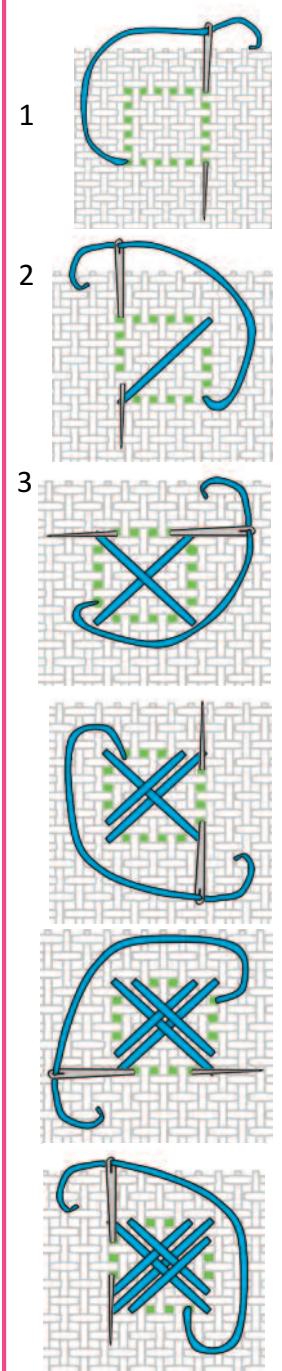
2. Bring the thread up at **c**, and take it diagonally across in the opposite direction, taking it back down at **d**.

3. Continue working around the square, working stitches across the square in the **a-t** sequence.

It can be worked as an individual stitch, or in groups.



RIGHT HAND



This guide is for home use only and not for reproduction, or to be modified for commercial or manufacturing purposes in any medium, including charitable and fundraising enterprise, for which express written permission is required.

© Dizzy & Creative 2022, all rights reserved.