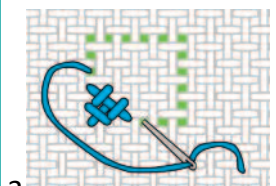
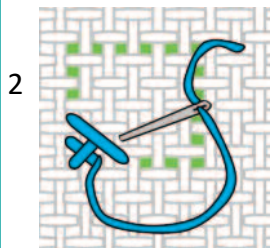
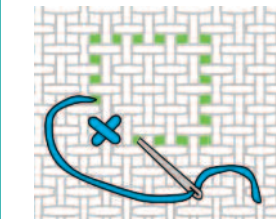
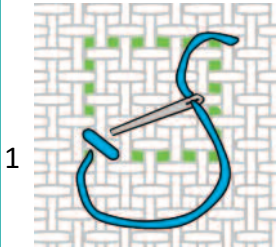
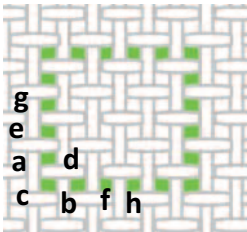


LEFT HAND



WOVEN STITCH

This stitch is usually worked by counting threads on an evenweave fabric, but can be worked on any fabric.

It can be worked to any size square, and uses every available hole. The stitch is formed by couching across diagonal stitches, to create a woven appearance.

1. Start by working a single cross stitch, working first across the diagonal from the corner of the square (**a to b**), and then from the corner inwards (**c to d**).

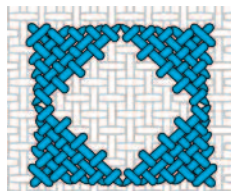
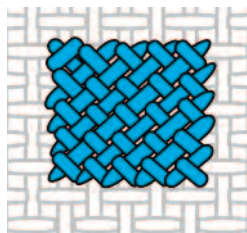
2. Bring the thread up at **e** and make a second stitch across to **f**. Bring the thread up at **b** and make a couching stitch across the stitch just made and into the next hole. Bring the thread up at **a** and make a second couching stitch.

3. Bring the thread up in the next hole (**g**) and make the next diagonal stitch (**g to h**). Starting at **f**, work three couching stitches across the stitch just made, working in alternate holes to the previous row.

4. Continue to repeat the row of stitch and couching, increasing the length of stitch and number of couching to the size of the square, and then decreasing.

Keep the couching stitches in alternate holes for each row.

To join a new thread: Take the thread as indicated at the step being worked. Finish off at the back of the work. Bring a new thread up where the step being worked indicates, and continue stitching.



VARIATIONS

Work just half a square, to create a triangle.

Group triangles, and combine with other stitches.

Use separate colours for the stitch and the couching.

RIGHT HAND

